

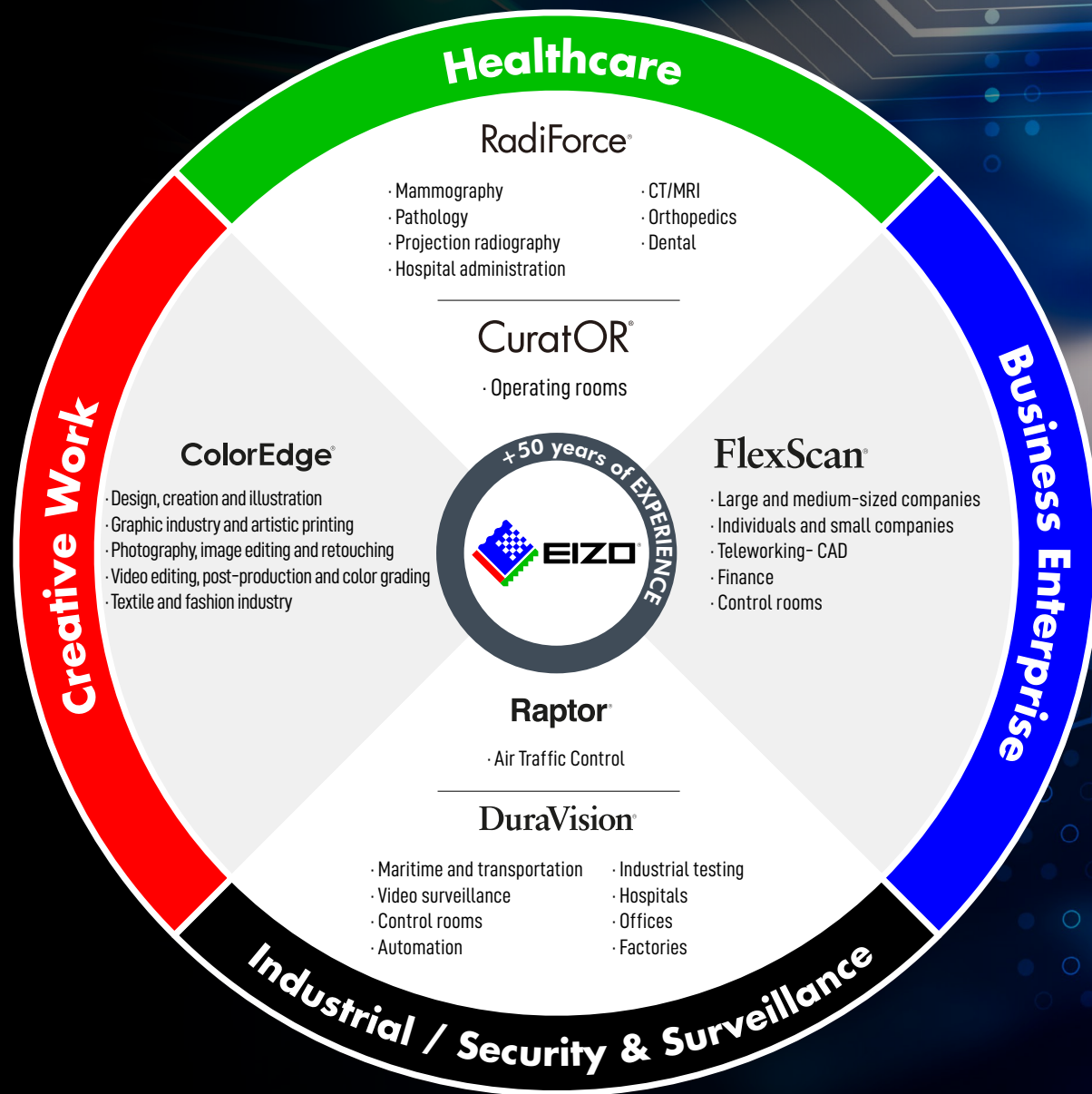


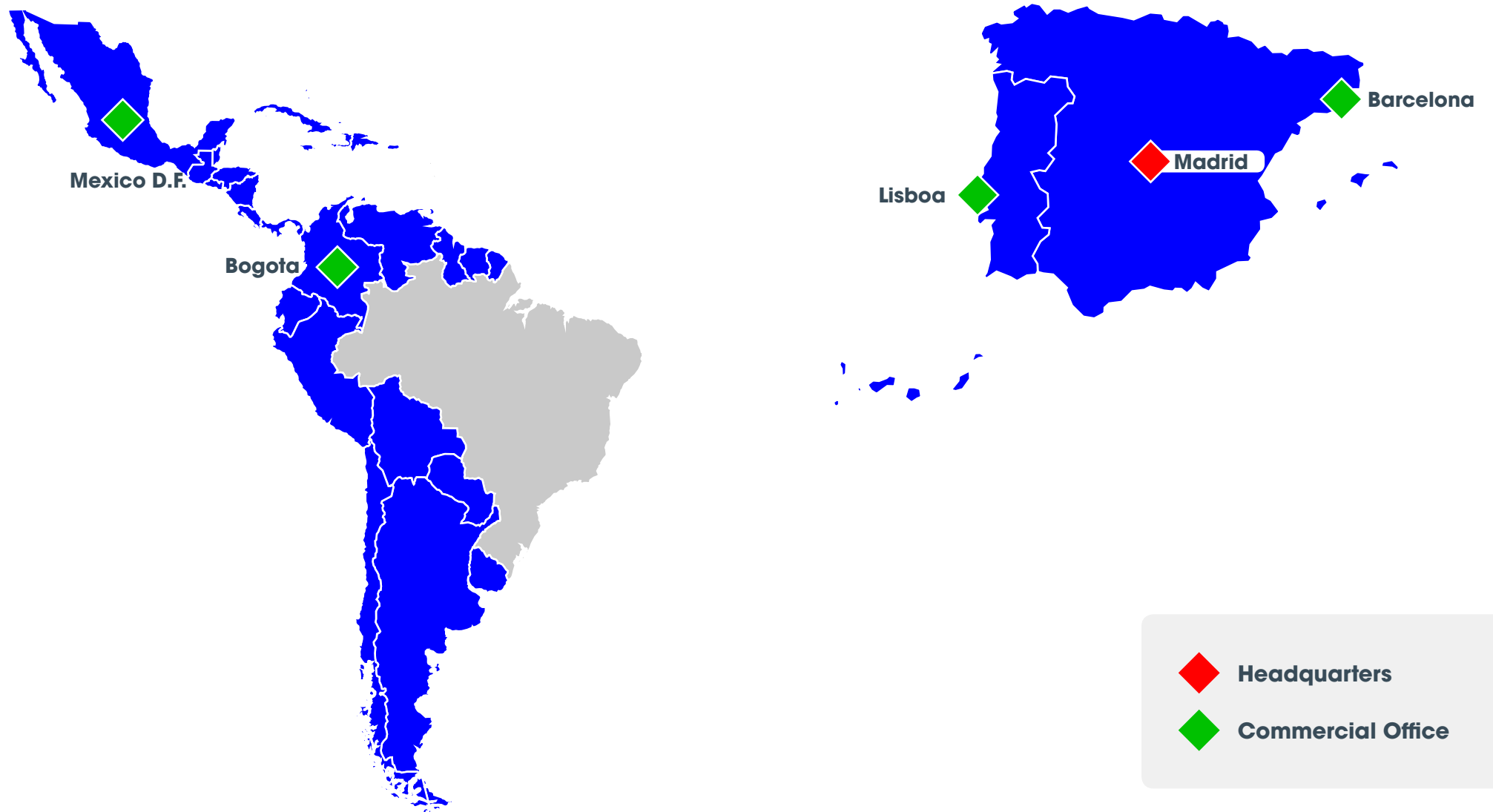
Vertical Markets

EIZO Iberia & Latam

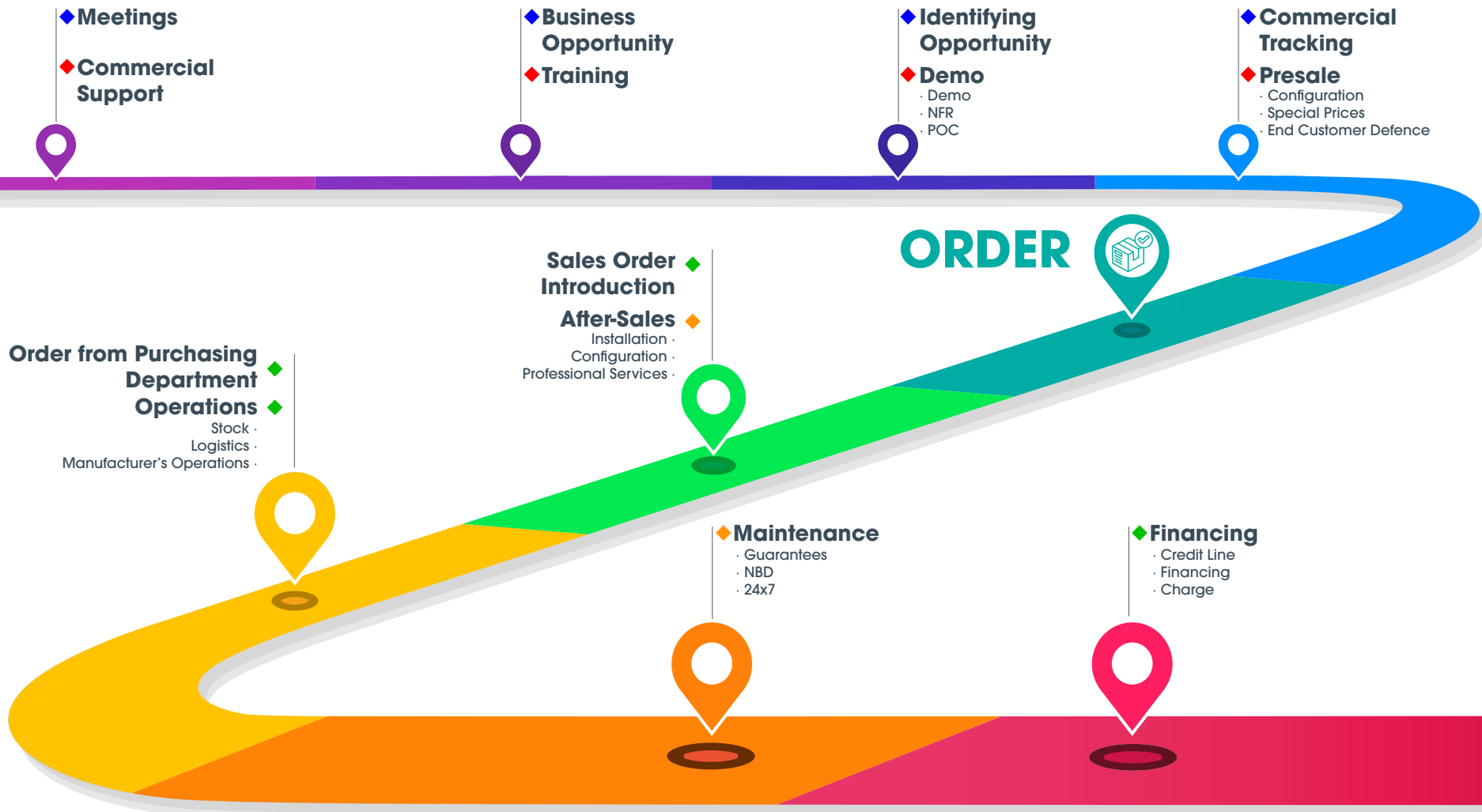
Avenida de la Industria 4, Natea Business Park
Edificio E2 3° ES - 28108 Alcobendas, Madrid (Spain)

T. +34 91 657 48 22
www.eizo.es









◆ Sales Team

- Sales Director Division
- Account Manager
- Internal Sales

◆ Presales Team

- Presales Director
- Presales Level 2
- Presales Level 1

◆ After-Sales Team

- After Sales Level 2
- After Sales Level 1

◆ Back Office Team

- Commercial Assistant
- Financial Dept.
- Logistics Dept.
- Renewals
- Operations Dept.
- Purchasing Dept.
- Marketing Dept.

HEALTHCARE



Mammography



Pathology



Projection radiography



Hospital management



TC / RM



Orthopedics



Dental



Operating rooms

RadiForce®

Medical Diagnostic and Visualization Monitors

The RadiForce series monitors comprehensively cover the different needs of medical facilities.

◆ Multimodality | ◆ Diagnosis | ◆ Clinical review



RX1270



RX660



RX560-MD



RX370



RX270



GX560-MD
Monocromático



MX317W



MX217SB



MX243W



MX194



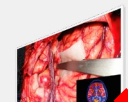
MS236WT-A

CuratOR®

Visual solutions for the integrated operating room

Powerful image reproduction and video management technology in the OR meets competence and experience.

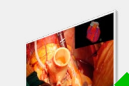
◆ Large format endoscopy | ◆ Medium format endoscopy | ◆ Magnetic resonance room



EX5542



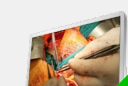
EX4942



EX4342



EX4342-3D



EX3242



EX3242-3D



EX3220



EX3220-3D



EX2721



LX3240-MR



LX1910

Software



RadiCS

RadiForce monitor management and calibration software



RadiNET Pro

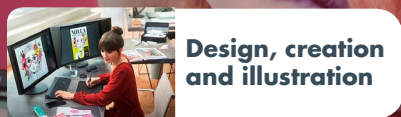
Software for networked quality management. With remote function



Calioip

Integration software that centralizes key OR workflows on a single platform

CREATIVE WORK



Design, creation and illustration



Video editing, post-production and color grading



Graphic industry and graphic printing



Photography, image editing and retouching



Textile and fashion industry

ColorEdge® Serie CS

- Wide color gamut
- 16-bit LUT for greater depth of color
- 10-bit color representation
- Homogeneous image representation using Digital Uniformity Equalizer (DUE)
- EIZO factory calibration
- ColorNavigator calibration software included
- Optional anti-glare cover



CS2400S



CS2400R



CS2731



CS2740

ColorEdge® Serie CG

In addition to the features of the CS series, the CG series monitors have additional features that catapult them into the absolute high-end league of graphics monitors.

- All features of the CS series
- Increased depths and contrasts thanks to True Black display
- Integrated sensor for automatic self-calibration
- Anti-glare cover included



CG2420



CG2700S



CG2700X



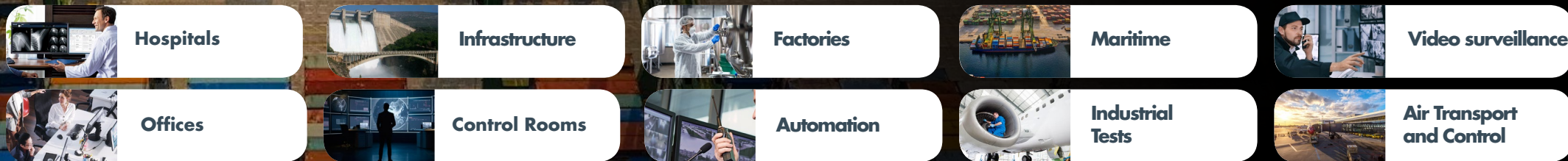
CG319X



CG3146



INDUSTRIAL / SECURITY & SURVEILLANCE



DuraVision®

A wide range of robust visual solutions designed for specialized applications and demanding environments, such as security and surveillance, maritime, industrial, etc.

◆ IP Decoding

◆ Touchscreen

◆ Maritime



FDF2711W-IP



FDS1903-A



FDF2312W-IP



FDF4627W-IP



FDF2182WT



FDF2382WT-A



FDU2603W / WT



FDS1904 / T



MDU5501WT

Raptor®

EIZO's ATC Visual system consists of intelligent monitors, encoding and streaming devices, software and servers for data capture and management of dedicated graphics cards.

◆ Primary Control | ◆ Tower



SQ2826



RP5525



RP4325



RP3225



RP2425

BUSINESS ENTERPRISE



Large and medium-sized companies



Individuals and small companies



Telework



CAD



Finances



Control Rooms

FlexScan® | 4K UHD

The models support 4K resolution (3840 x 2160 pixels), displaying four times the amount of information than standard HD (1920 x 1080 pixels) monitors. With 4K, you can display more applications simultaneously on a single screen, reducing scrolling or frequent window switching.



EV3240X



EV2740X



EV2785

FlexScan® | Ultra Slim

These monitors are virtually frameless. Even with the black borders along the perimeter of the LCD screen, there is very little distance between the viewing area of each display in a multi-monitor configuration, allowing for near-perfect viewing.



EV3895



EV2795



EV2781



EV2760



EV2495



EV2485



EV2456



EV2490



EV2480



EV2460



EV2360

FlexScan® | Slim

Perfect monitors to provide support over a main monitor to improve workflows.



EV2430



S2134



S1934